

The Idea of Institutions

a survey of concepts and approaches



Resource Economics Group



Berlin Workshop in
Institutional Analysis of
Social-Ecological Systems



UAB

Universitat Autònoma de Barcelona



Katharine N. Farrell BA, MSc, MScEng, PhD

Humboldt-Universität zu Berlin
Resource Economics Group,
Albrecht Daniel Thaer Institute
of Agriculture and Horticulture

& Berlin Workshop in Institutional
Analysis of Social-Ecological
Systems (WINS)

Universitat Autònoma de Barcelona
L'Institut de Ciència i Tecnologia Ambientals

katharine.farrell@hu-berlin.de
katharine.farrell@QUB.ac.uk

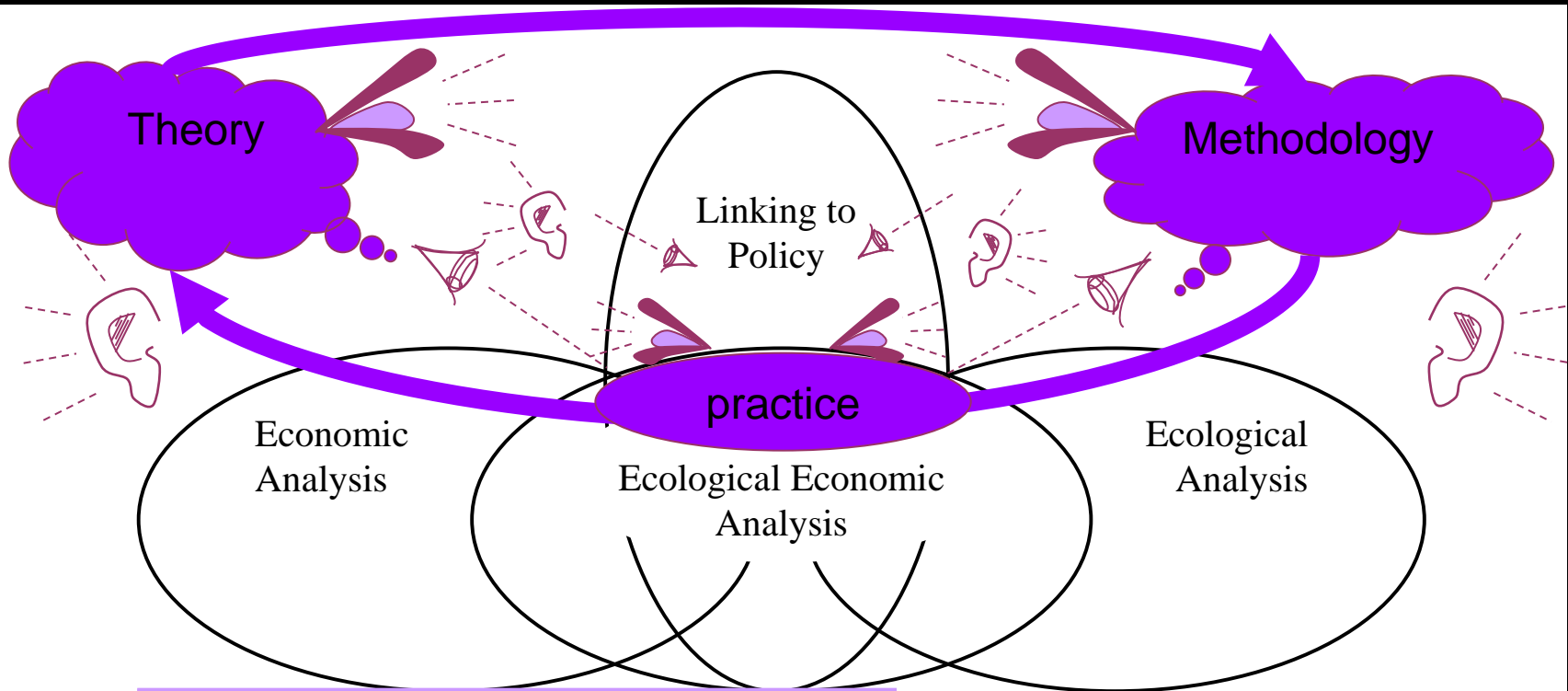


Catwalk Creations

The Latest, Greatest Looks From NYFW
See the Highlights



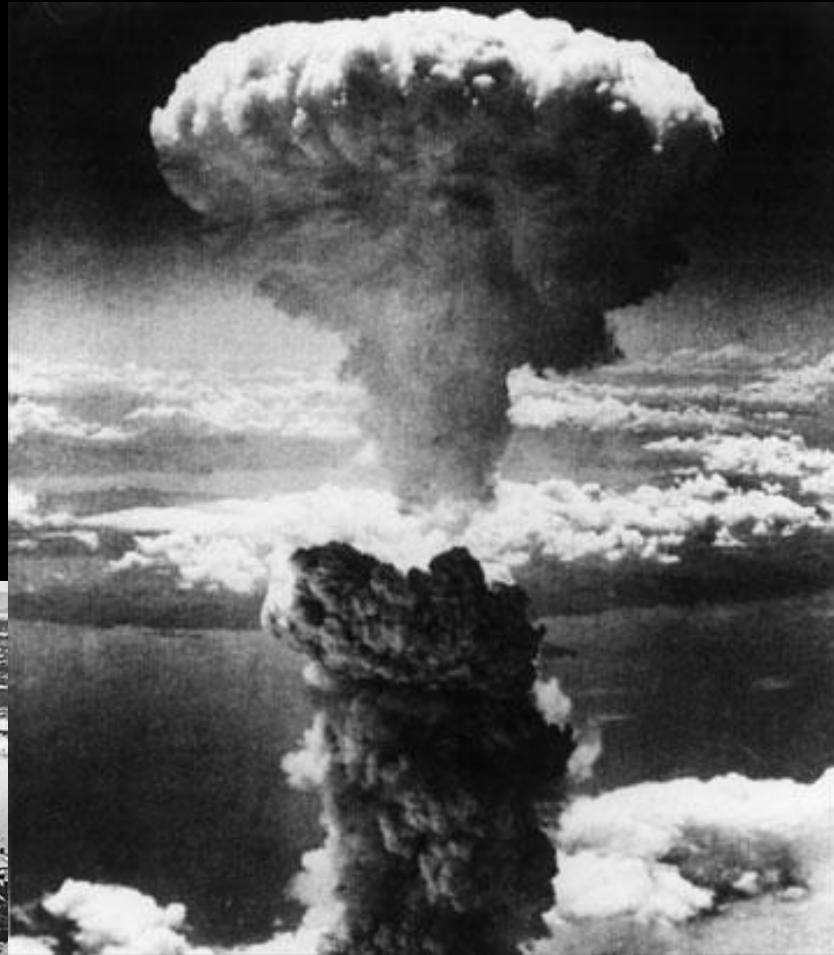
Giampietro and Mayumi's Fourth Requisite Ability for Ecological Economics



“to describe, understand and engage with the processes through which humans translate understandings of the predicament of sustainability into collective action”

Giampietro, M and Mayumi, K . 2001. “Integrated assessment of sustainability trade-offs: Methodological challenges for Ecological Economics.” Paper presented at the EC High Level Scientific Conference *Frontiers 1: Fundamental Issues of Ecological Economics*, Cambridge, UK 4-7 July, 2001.

An Historic Shift in Basic Material Relationships Human / Human; Human / Technology; Human / Nature



The Bombings of Hiroshima and Nagasaki, Japan - August 6th and 9th, 1945

<http://www.atomicarchive.com/History/twocities/nagasaki/image3.shtml>

<http://www.wz-newsline.de/home/politik/ausland/nagasaki-gedenkt-68-jahrestag-des-atombombenabwurfs-1.1392542>

**focus-level
the act of valuing**

		Structure				
		living systems phenomena / the object of valuation / what environmental value articulation is looking at				
		Structure		Function		
		A Perspectivity	B Multi-dimensionality	C Alive	D Evolving	
Function	Structure	A Knowing	1	2	3 Anthropogenic Epistemology	4 Anthropogenic Epistemology
		B Comprehending	5	6	7 Chapter 5 An Analytical Critique of the Pragmatic Defence	8 Chapter 5 An Analytical Critique of the Pragmatic Defence
	Function	C Choosing	9	10 Chapter 5 The Traditional Analytical Critique	11 Chapters 6 and 7	12 Chapters 6 and 7
		D Doing	13 Chapter 6	14 Chapter 6	15 Chapters 6 and 7	16 Chapters 6 and 7

how well is a given society doing evolving?

Farrell, K.N. 2009 [2005] *Making Good Decisions Well: a theory of Collective Ecological Management*
Shaker Verlag: Aachen [Queen's University Belfast, Northern Ireland]. p.170

The Idea of Institutions

- From Latin *institutum* "an ordinance; a purpose; a custom; precedents; principal components," literally "thing set up" (Harper, online etymology)
- Enduring; Persistent; Tacit; Ubiquitous
- Rule / Norms / Habits / Customs / Ways

“...conventions, norms and formally sanctioned rules of a society. They provide expectations, stability and meaning essential to human existence and coordination. Institutions regularize life, support values and protect and produce interests.”

Vatn, A., 2005. *Institutions and the Environment*. Edward Elgar Publishing, Cheltenham: 83

Janus, Institutions and Ideas



the way things are done
shapes options for action
that might become habit

action, becomes practice
become habit, becomes
the way things are done





Technology as Salvation: Technological Optimism



Technology as Liberation

Technology as Ideology: Late-Industrial Oppression



Tuesday, September 21, 2010
Beijing's 100km, Nine Day Traffic Jam

<http://blog.outr.org/2010/09/beijings-100km-nine-day-traffic-jam.html>

Scientific Knowledge Production and Institutions

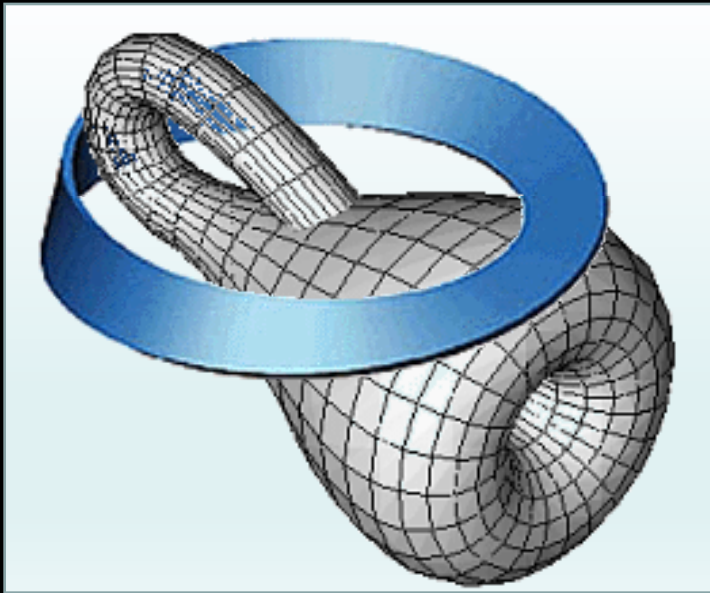
“[N]eutral” scientific method and technology become the science and technology of a historical phase which is being surpassed by its own achievements - which has reached its determinate negation . . . this development confronts science with the unpleasant task of becoming *politica* - of recognizing scientific consciousness as political consciousness, and the scientific enterprise as political enterprise”

Herbert Marcuse, 1991 [1964] *One-Dimensional Man: Studies in the Ideology of Advanced Industrial Society* London: Routledge. p.237.

facts and figures are the heroes in man’s struggle with nature. In their purest form, they become the greatest good and the ultimate measure of value in late industrial societies

Farrell, K.N. (2011). "Snow White and the Wicked Problems of the West: A Look at the Lines Between Empirical Description and Normative Prescription." *Science Technology and Human Values* 36(3):334-361.

an inescapable performative contradiction*



**what we are looking at
when studying institutions
is quite literally
that with which we are looking**

“The traditional fact/value distinction has not merely been inverted; in post-normal science the two categories cannot be realistically separated.”

Funtowicz, S., O. and Jerome R. Ravetz (1993).
Science for the postnormal age. *Futures* 25, 739-755.

* Cilliers, P. (2005). Complexity, Deconstruction and Relativism
Theory, Culture & Society 22, 255-267.

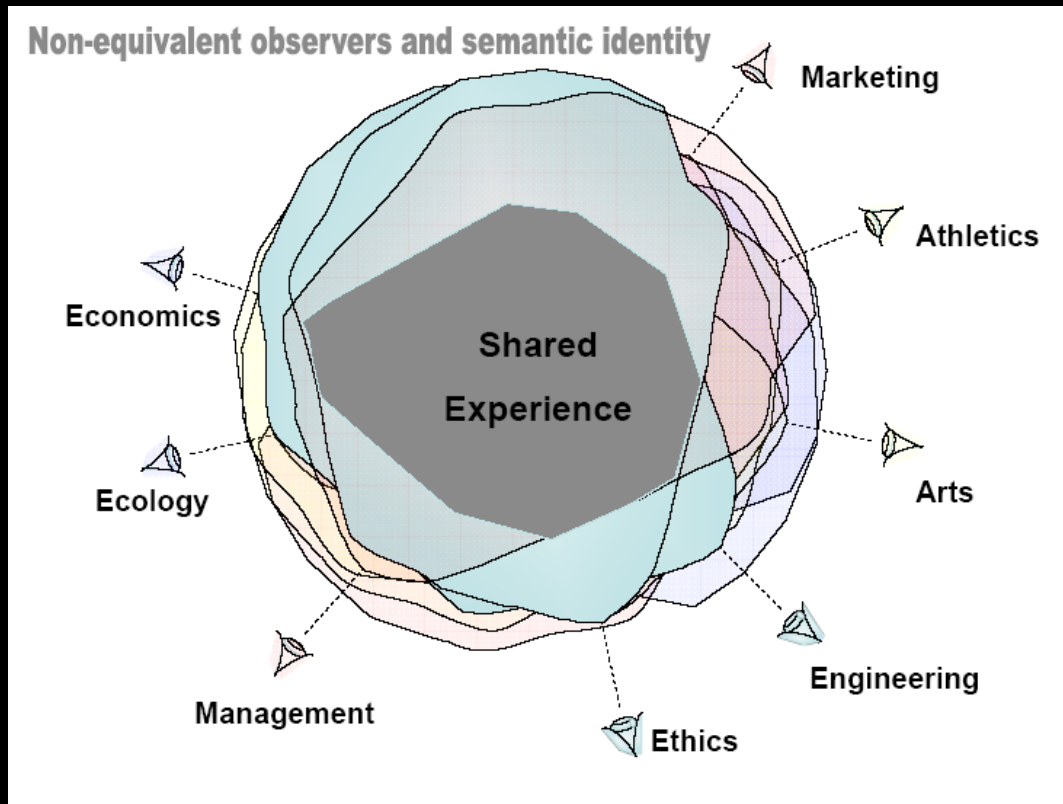
An Ethical and Epistemological Challenge for institutionalized Study of Institutions

- where historical experiences, reified in institutions, influences ones modes of problematization
- and ones modes of problematization influence ones perceptions of historical experience
- this shapes how one contributes toward creating the future ...
- Foucault, demurring from “programs for a new man[,]” proposes ...

a “philosophical ethos appropriate to the critical ontology of ourselves as a historico-practical test of the limits that we may go beyond, and thus as work carried out by ourselves upon ourselves as free beings”

Foucault, Michel (1984). What is Enlightenment. In: Paul Rabinow (Ed.)
The Foucault Reader. London: Penguin Books Ltd.p. 7.

Figure 7.1:inter-disciplinary collaboration: a holarchy^[1]



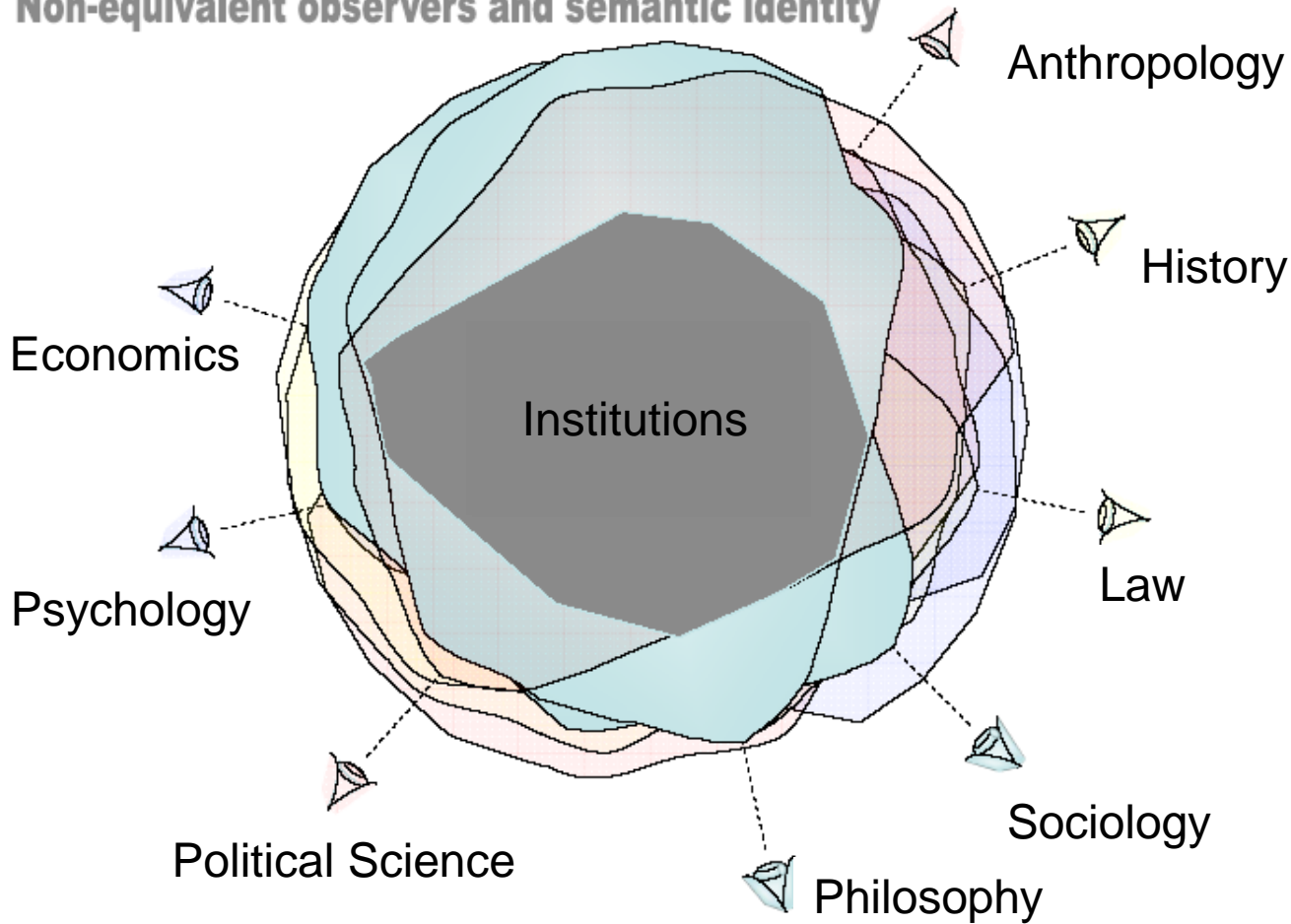
Epistemological
Complexity,
Semantic Identity
and
Under-determined Ideas

^[1] With regard to this and subsequent images, it is important to note that these are static 'snap-shots' of single moments within a distributed complex of living systems processes that are both spatially and temporally dynamic. These images should not be viewed as fixed frames for fixed processes but as indicative representations of the relative orientations of multiple dynamically inter-related living systems.

Source: adapted by the author from pre-publication material included here by the kind permission of T.F.H. Allen, Mario Giampietro and Kozo Mayumi

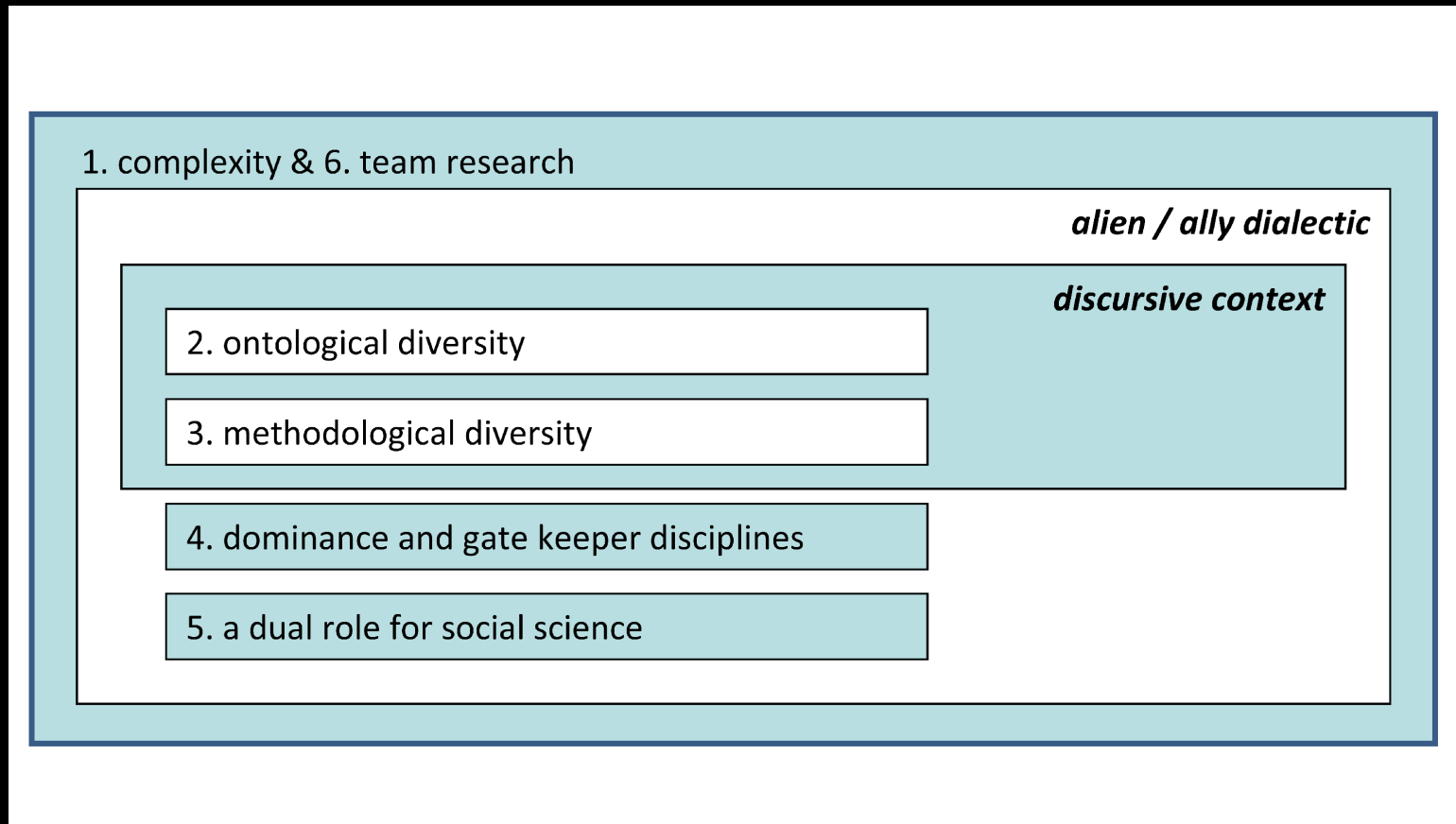
Farrell, K.N. 2009 [2005] *Making Good Decisions Well: a theory of Collective Ecological Management*
Shaker Verlag: Aachen [Queen's University Belfast, Northern Ireland] p.239

Non-equivalent observers and semantic identity



Adapted from Farrell, 2009 [2005] *op. cit.* p.239

a working ontology of the typical SES (social-ecological systems) research project



Farrell, Katharine N., Sybille van den Hove and Tommaso Luzzati (2013) "What lies beyond reductionism? Taking stock of inter-disciplinary research in ecological economics." In Beyond Reductionism: a passion for interdisciplinarity, eds. Katharine N. Farrell, Sybille van den Hove and Tommaso Luzzati. London: Routledge.

Creativity and political Science

		Ontological Compatibility		
		Absent	Weak	Strong
Methodological Compatibility	Absent	Political	political / ontological	Ontological
	Weak	political / methodological	Confusion & Creativity	ontological / technical
	Strong	Methodological	methodological / technical	Technical

Farrell et al 2013. *op. cit.*

Potential Research Questions

- What similarities and differences can be observed across ontologies and methodologies used in the social sciences to study institutions?
 - What patterns exist? and how do these map onto what is known about which institutions influence the social sciences to study institutions?
- What institutional constraints and opportunities influence efforts to study how institutions influence the study of institutions?
 - How could such study be configured within the existing institutional context of IRI THESys? of WINS?
- ...
- ...
- ...

Social Anthropology

- Ontologically – concerned with Human Self-understanding
 - Culture; Language; Religion; ...
- Methodologically based in ethnography
- Ideas of Institutions:

Philosophy

- Ontologically – concerned with Concepts
 - Justice; Discipline; Desire ...
- Methodologically based in logic
- Ideas of Institutions:
 - Natural laws: universal ethical standard
 - Chosen practices: regimes and hegemony
 - Emergent properties: epiphenomena

Political Science

- Ontologically – concerned with Procedures
 - Government; Administration; Armed Conflict;
 - ...
- Methodologically based in survey
- Ideas of Institutions:
 - Collections of procedures: rule of law
 - Accumulated habits: bureaucracy
 - Universal routines: strategic alliances

Sociology

- Ontologically – concerned with Relationships
 - Power; Organisation; Position; ...
- Methodologically based in observation
- Ideas of Institutions:
 -

Economics

- Ontologically – concerned with Things
 - Factors; Products; Accumulation; ...
- Methodologically based in calculation
- Ideas of Institutions:
 - Strategies to minimize transaction costs: the market; the firm
 - Constraints on use and transfer of things: property rights
 - Accumulated habits: the use of money

Nachhaltigkeit

Die Menschheit verändert tiefgreifend und langfristig, dass in Wissenschaftler vor. An dem einen: dem Anthropozän, das mit Beginn. Denn seither dominiert der Mensch in Kulturlandschaften. Die Landschaften sind als Gegenüber Mensch und Umwelt. Systeme sind Aufgabe des „Management“, sondern auch um die Zerstörung der

Sustainability – A collective task

Mankind has changed the Earth so drastically and long-term, and more scientists are talking about a new geological epoch, which began with the beginning of industrialization. Mankind dominates global development, and landscapes. Culture and nature are rather intermeshed in the environment. Management, not only for the destruction of biodiversity, but also to maintain positive

Therapy as Science



- the professional is political
- the personal is political
- the professional is personal

a collaborative task

creating a critical ontology of ourselves

beyond Beckean sub-politics: to drivers

communication about communication*

* Watzlawick, P., J. Beavin Bavelas and D.D. Jackson. 1967. *Pragmatics of Human Communication: A Study of Interactional Patterns, Pathologies, and Paradoxes*. New York: W.W. Norton. Cited In: Farrell et al 2013. *op. cit.*

thank you
for your attention!

Resource Economics Group

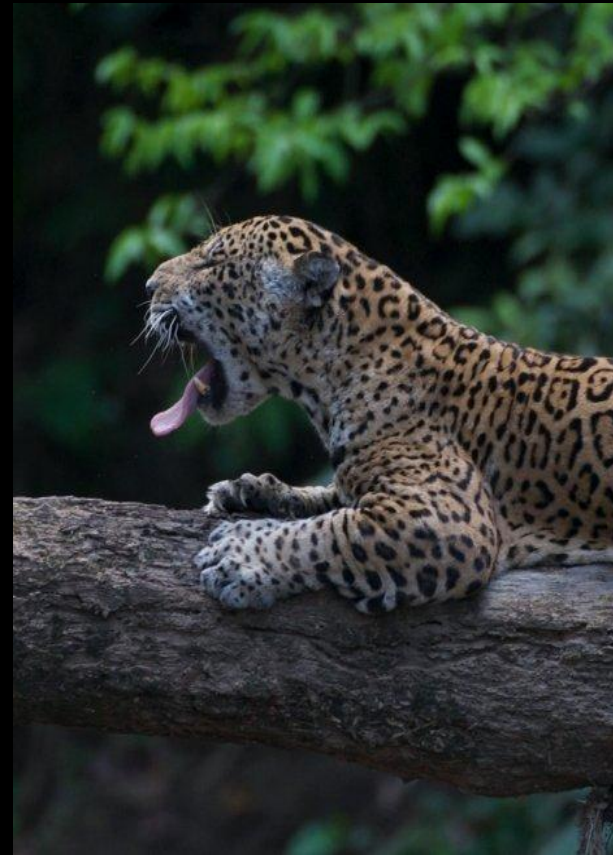


Berlin Workshop in
Institutional Analysis of
Social-Ecological Systems



UAB

Universitat Autònoma de Barcelona



a jaguar at rest in the Amazon, taken by Robert Williams
given to me by Jose Carlos Silva Macher: for inspiration